

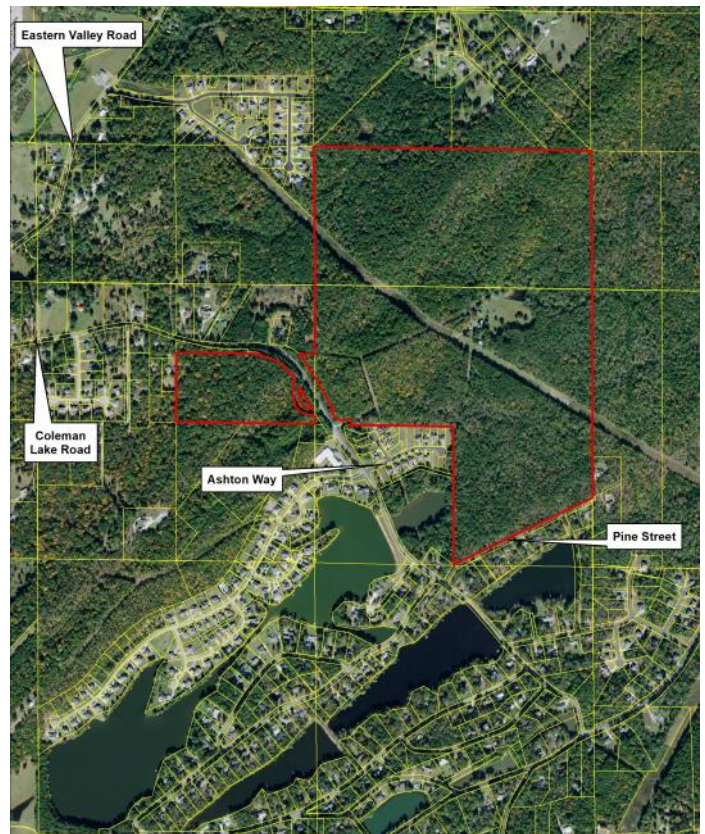
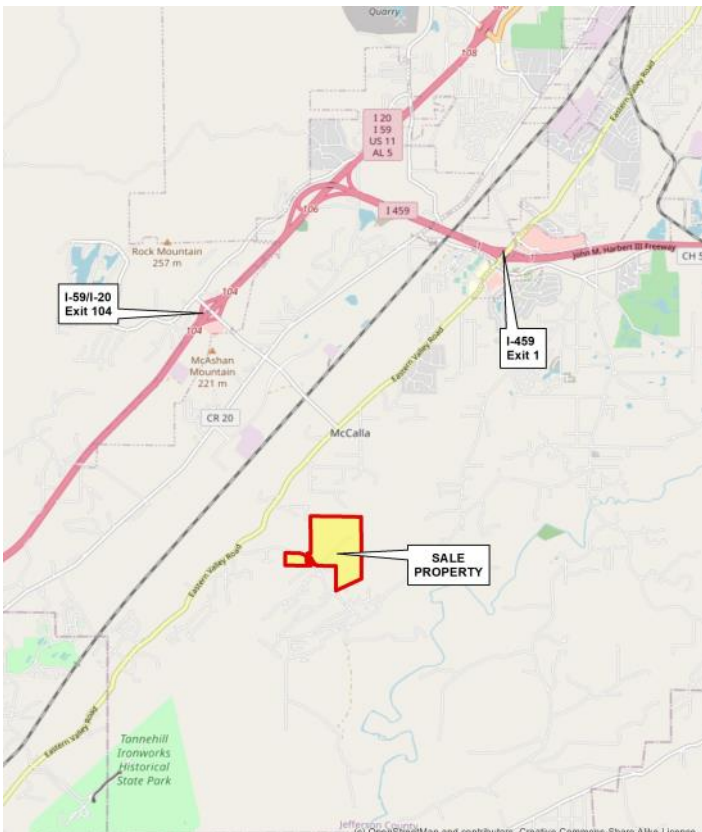
**FOR SALE:** 208 ± acres in the McCalla Area of Jefferson County, Alabama. This is one of the most sought after areas convenient to I-59 and I-459. Located on Coleman Lake Road less than 5 miles to Exit 1 on I-459 & Tannehill Promenade Shopping Center. The shopping center includes: Publix, Target, multiple retail outlets & restaurants. In the immediate area you will also find banks, medical clinics, CVS & Bent Brook Golf Course.

Listed by Eddie Stone, Land REALTOR with  
Great Southern Land, LLC



The property fronts Coleman Lake Road, which leads to upscale neighborhoods, some join this property. Ashton Way subdivision borders the property on the southwest & has Jefferson County sanitary sewer. Pine Street borders on the south line for approximately 1450 feet providing another easy access point.

McAdory Elementary is about one mile from this location.



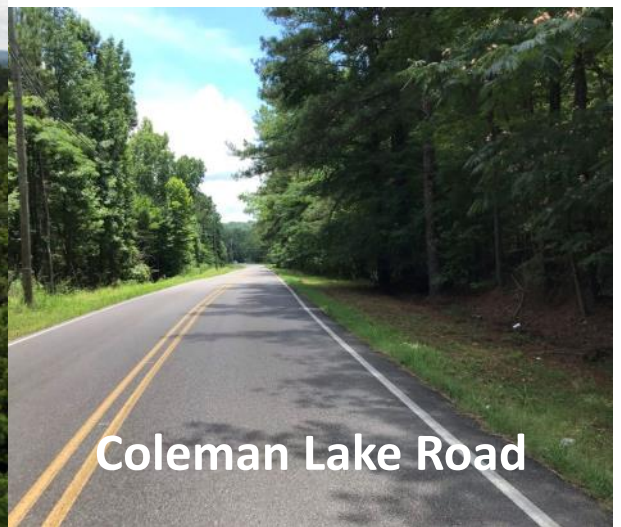




These are homes are adjacent to the sale property



Aerial view from above the property looking southwest



Coleman Lake Road



Pine Street



Sale Property

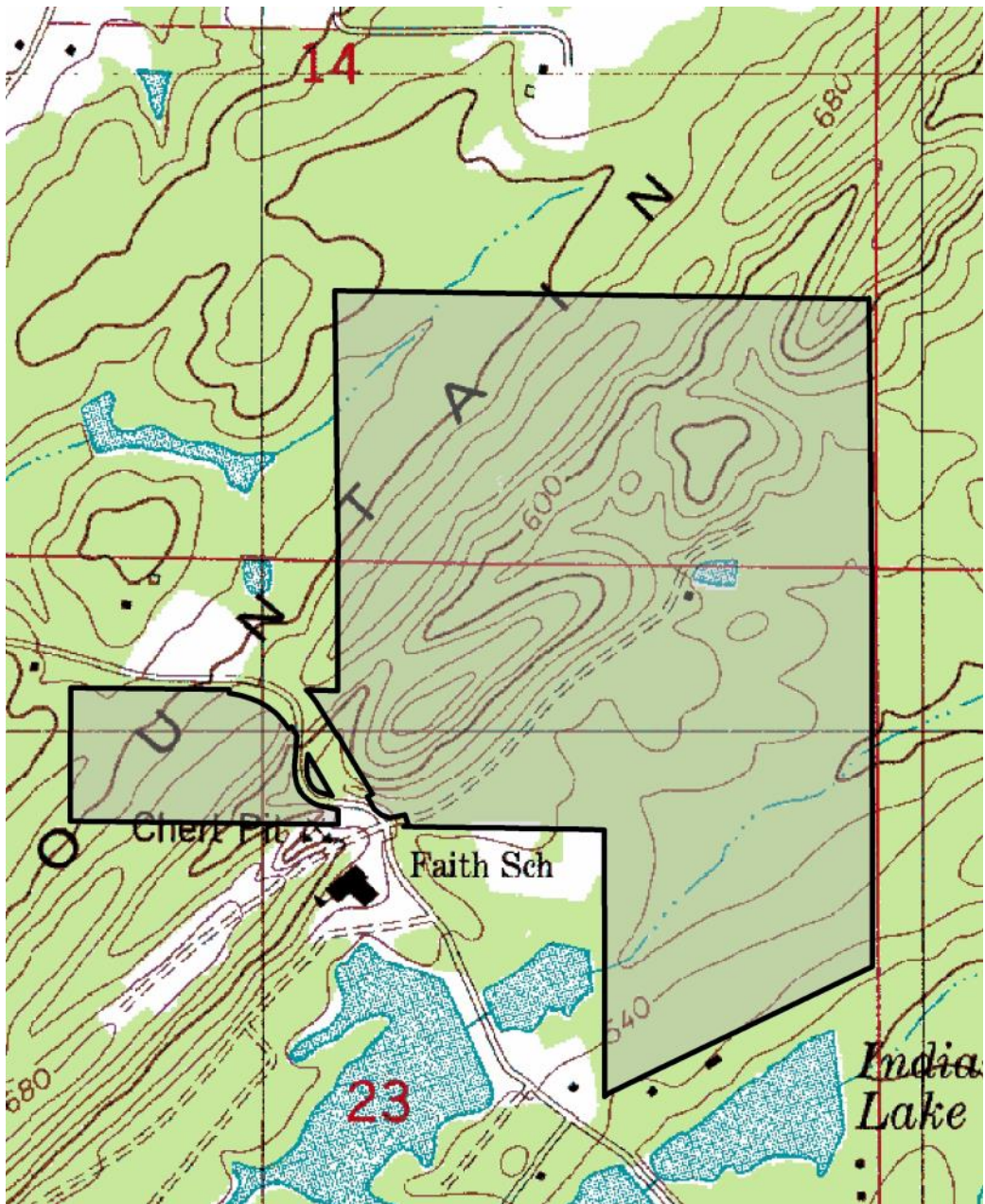


The landscape here is beautiful, featuring: old growth hardwoods and pines, a nice stream, gently rolling hills and plenty of open space.





## Topography Map



**For more information or to arrange a showing, contact:**

**Eddie Stone**

**205-837-4466**

**[edstonerealtor@gmail.com](mailto:edstonerealtor@gmail.com)**