

NORTH PARCEL

2.97+/- ACRES
ZONED B-2

SOUTH PARCEL

3.28+/- ACRES
ZONED M-1

**PARCELS ARE
OFFERED
TOGETHER
AS ONE SALE**

I-65 at Calera, Exit 228
6.25+/- Acres in Shelby County, Alabama
Tract # 58-005 Offered for \$850,000

TWO PARCELS TOTAL 6.25 ACRES ARE OFFERED AS ONE SALE

- CALERA CITY LIMITS AND SHELBY COUNTY
- VISIBLE EXPOSURE TO INTERSTATE 65
- HEAVY TRAFFIC ACCESSING THE INTERSTATE VIA HIGHWAY 25 FROM BOTH CALERA AND COLUMBIANA, SEE TRAFFIC COUNT ON PAGE 4
- MULTIPLE RESIDENTIAL SUBDIVISIONS NEARBY: TIMBERLINE, STONEBRIAR, OLD IVY HILLS, MARENGO AND SHADY HILLS
- TIMBERLINE GOLF COURSE DUE EAST
- RPR REPORTS AVAILABLE UPON REQUEST



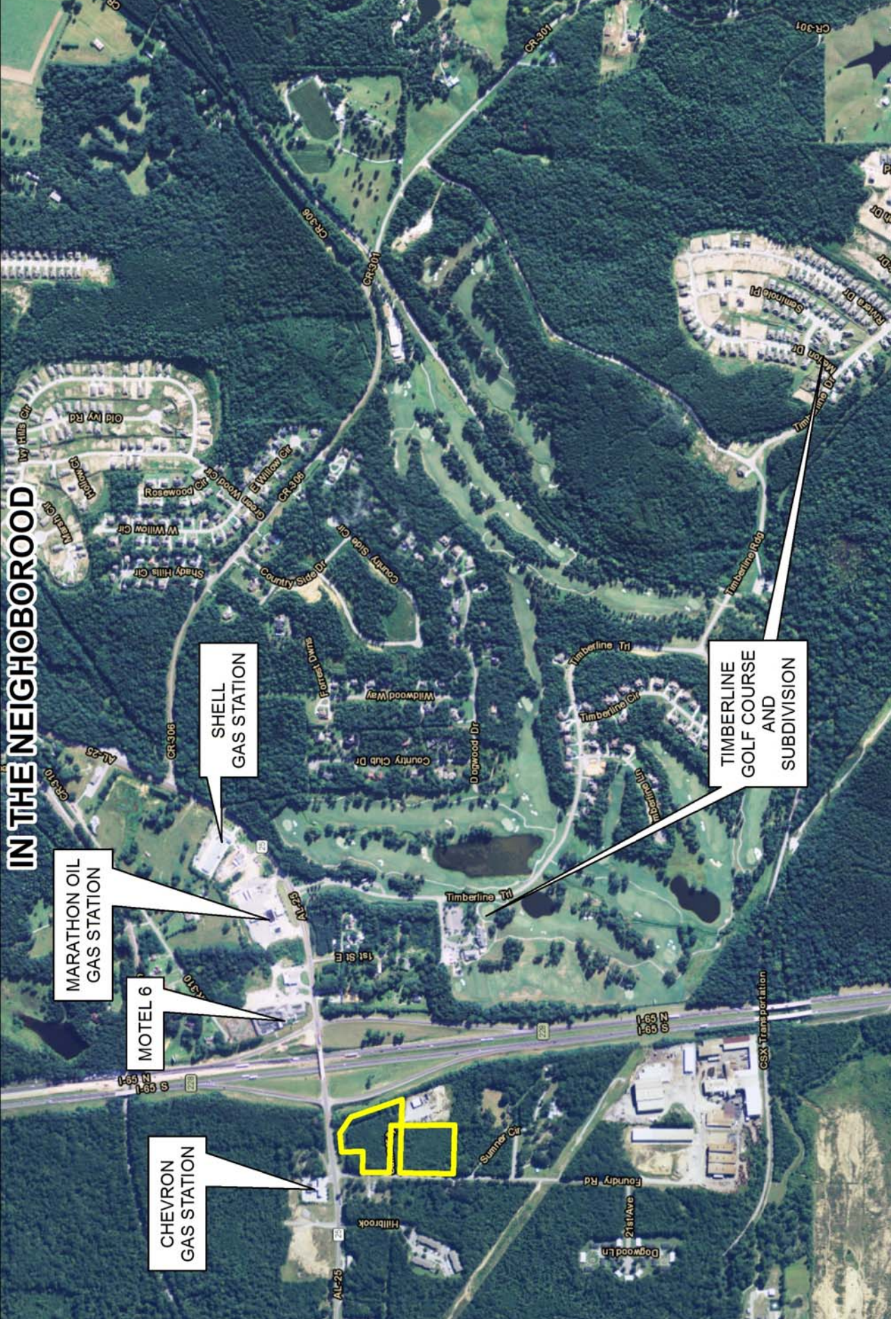
Eddie Stone, Listing Agent
 205-837-4466 cell
 205-702-4420 office
edstone@windstream.net

Great
Southern
Land

Fletcher Majors, ALC, Broker
 334-567-0924 Office
 334-328-9278 cell
[Fletch-](#)

www.GreatSouthernLand.com

IN THE NEIGHBORHOOD



MARATHON OIL
GAS STATION

SHELL
GAS STATION

MOTEL 6

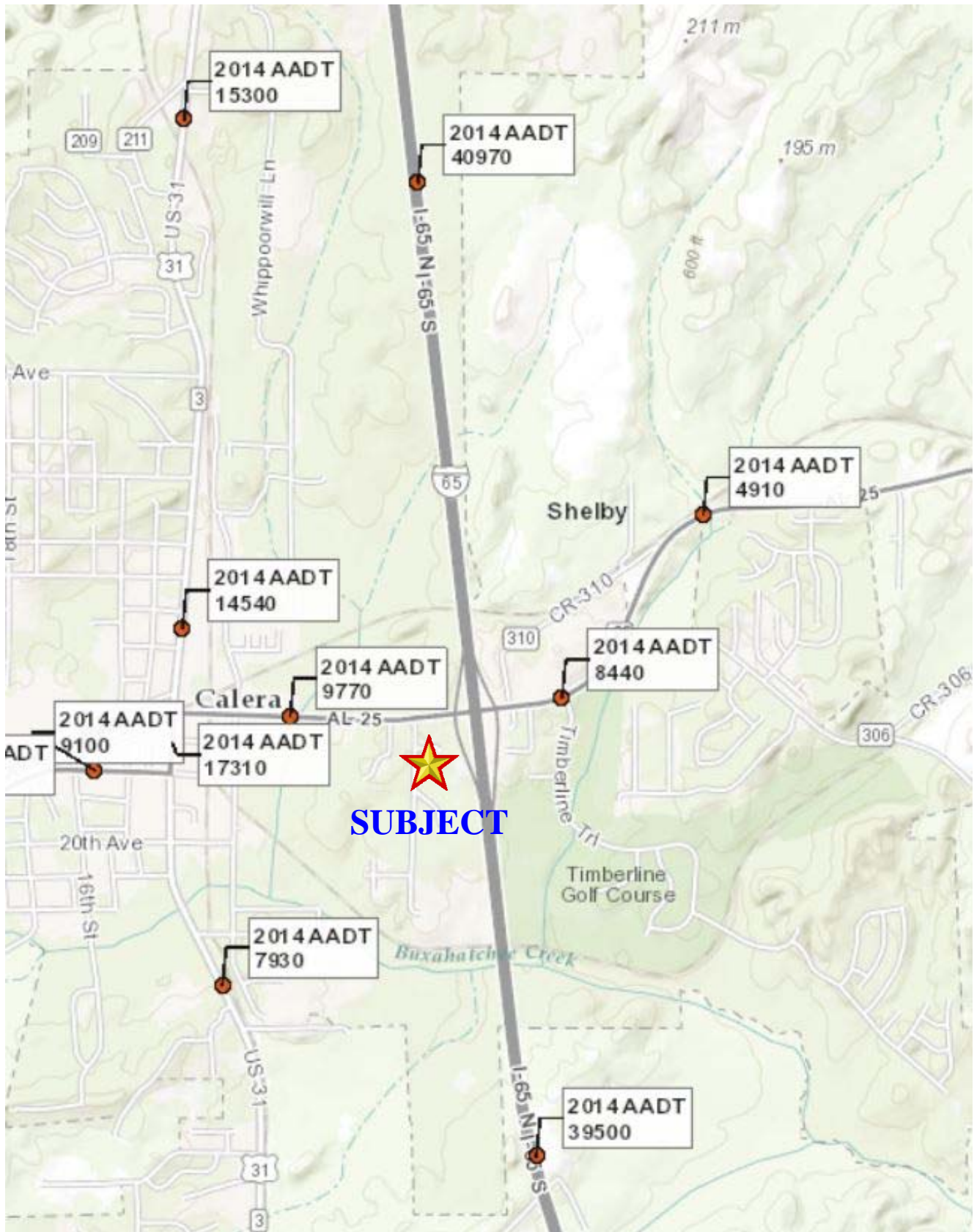
CHEVRON
GAS STATION

TIMBERLINE
GOLF COURSE
AND
SUBDIVISION

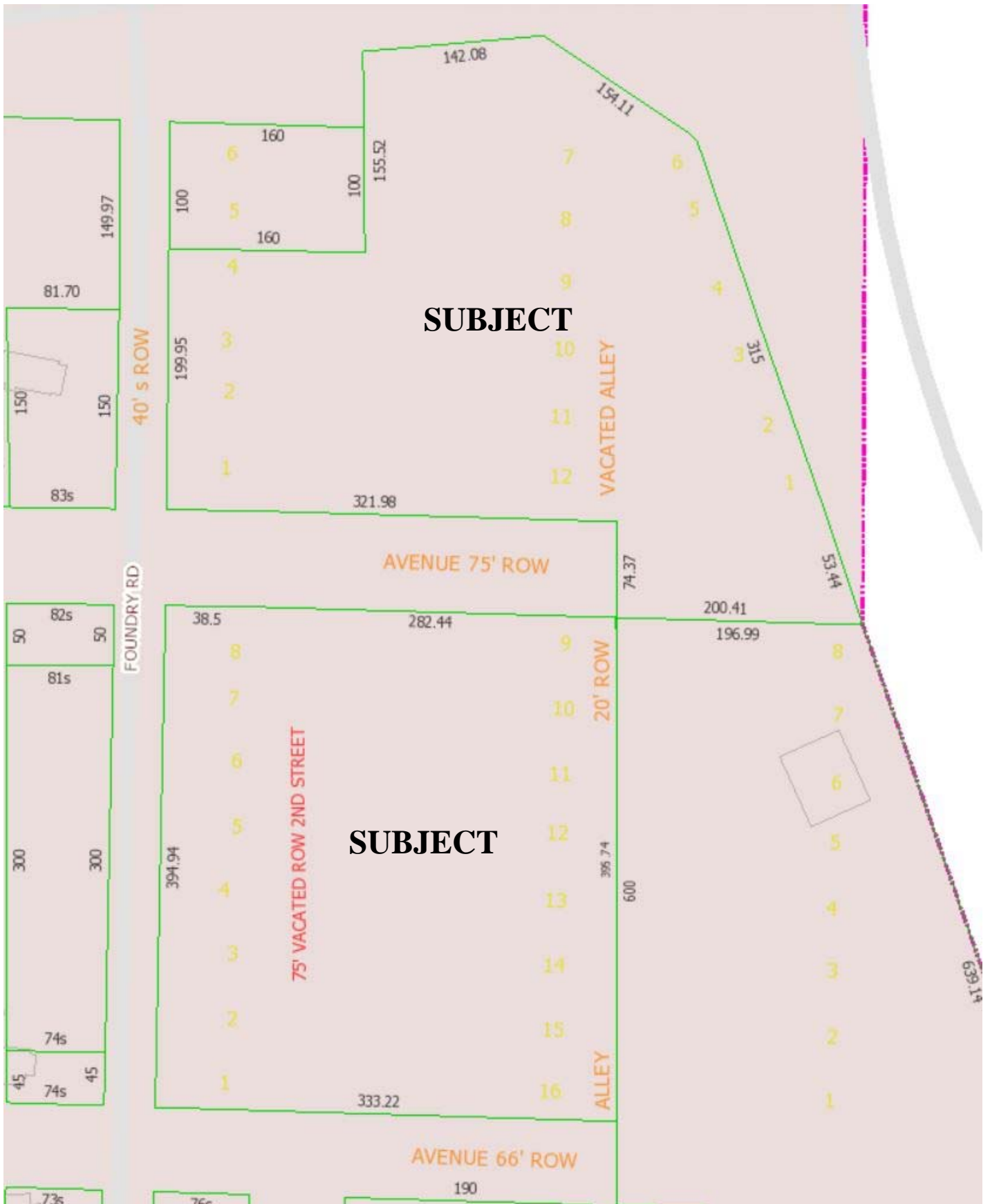
IN THE NEIGHBORHOOD



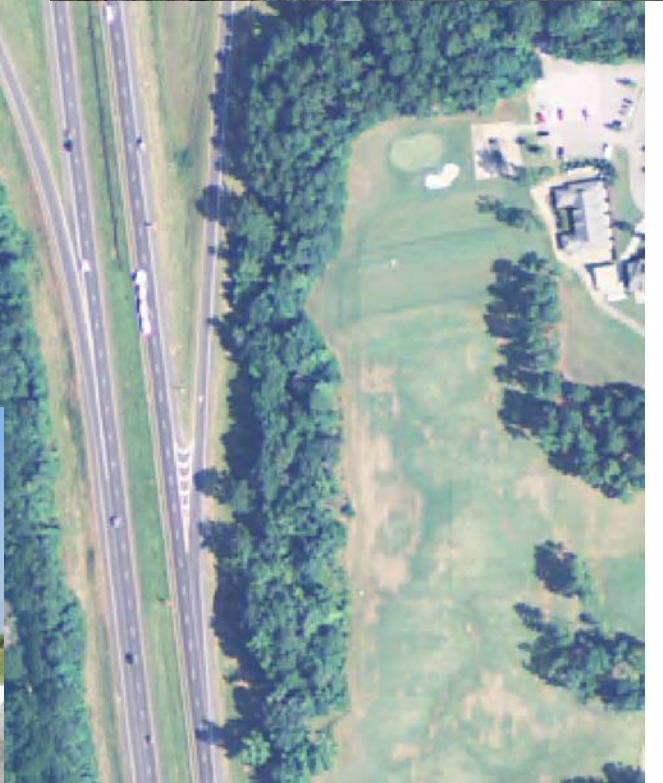
2014 ALDOT TRAFFIC COUNTERS



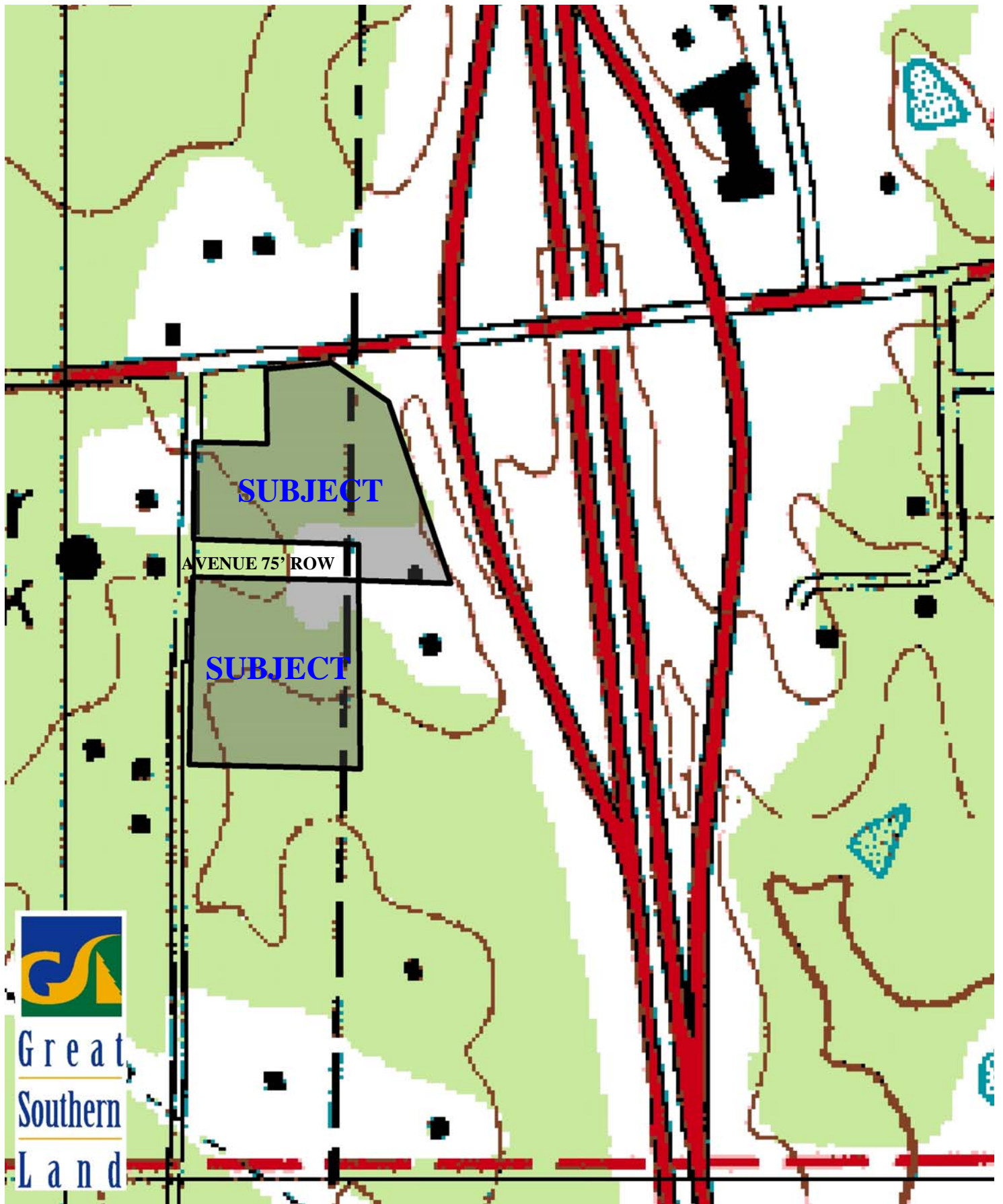
TAX MAP SHOWING LOT DIMENSIONS



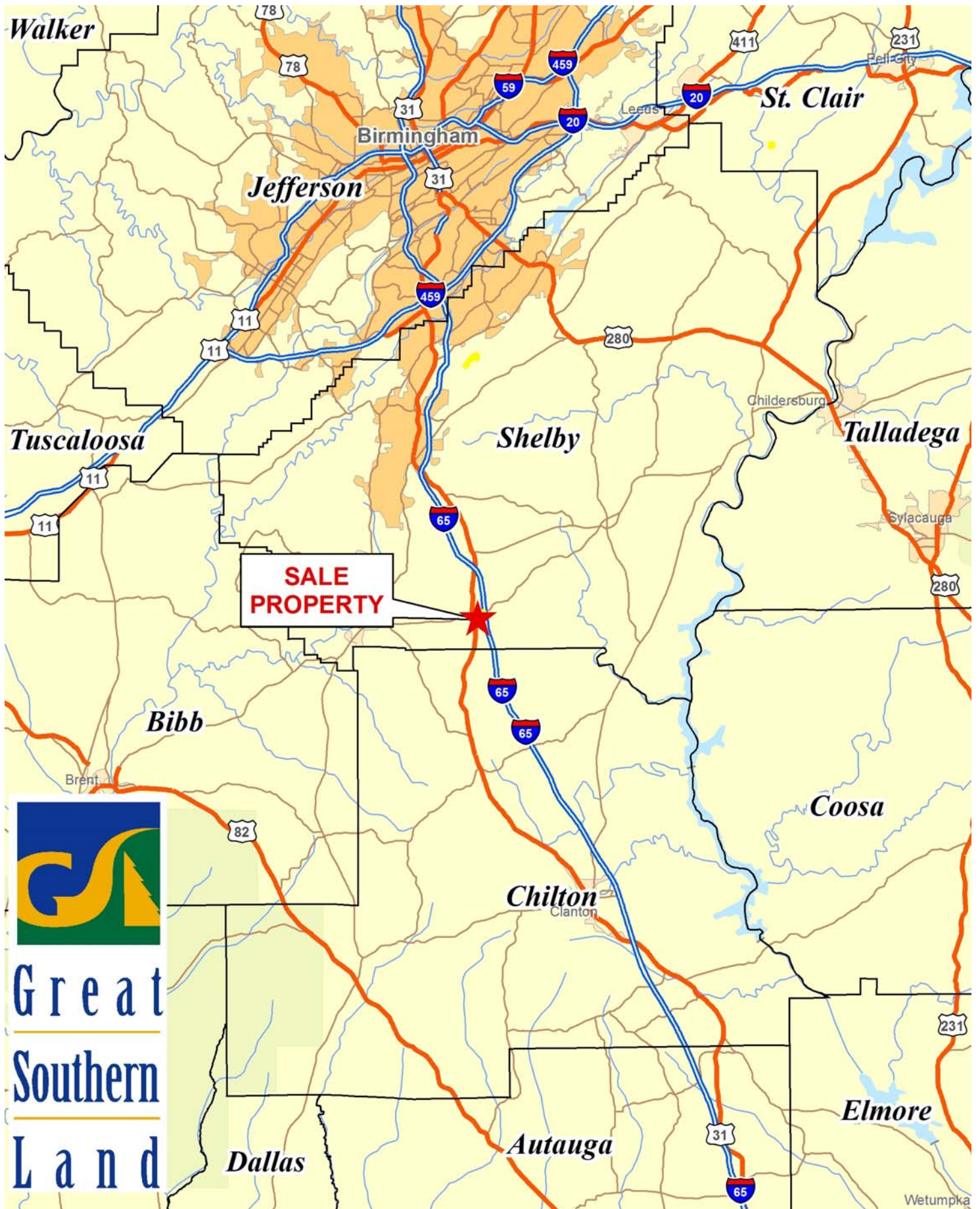
AERIAL SHOWING FRONTAGE ON HIGHWAY 25 AND INTERSTATE 65



TOPOGRAPHY MAP SHOWING RELATIVELY FLAT LAND



FOR MORE INFORMATION OR TOUR CONTACT EDDIE STONE
205-837-4466, edstone@windstream.net



Great
Southern
Land